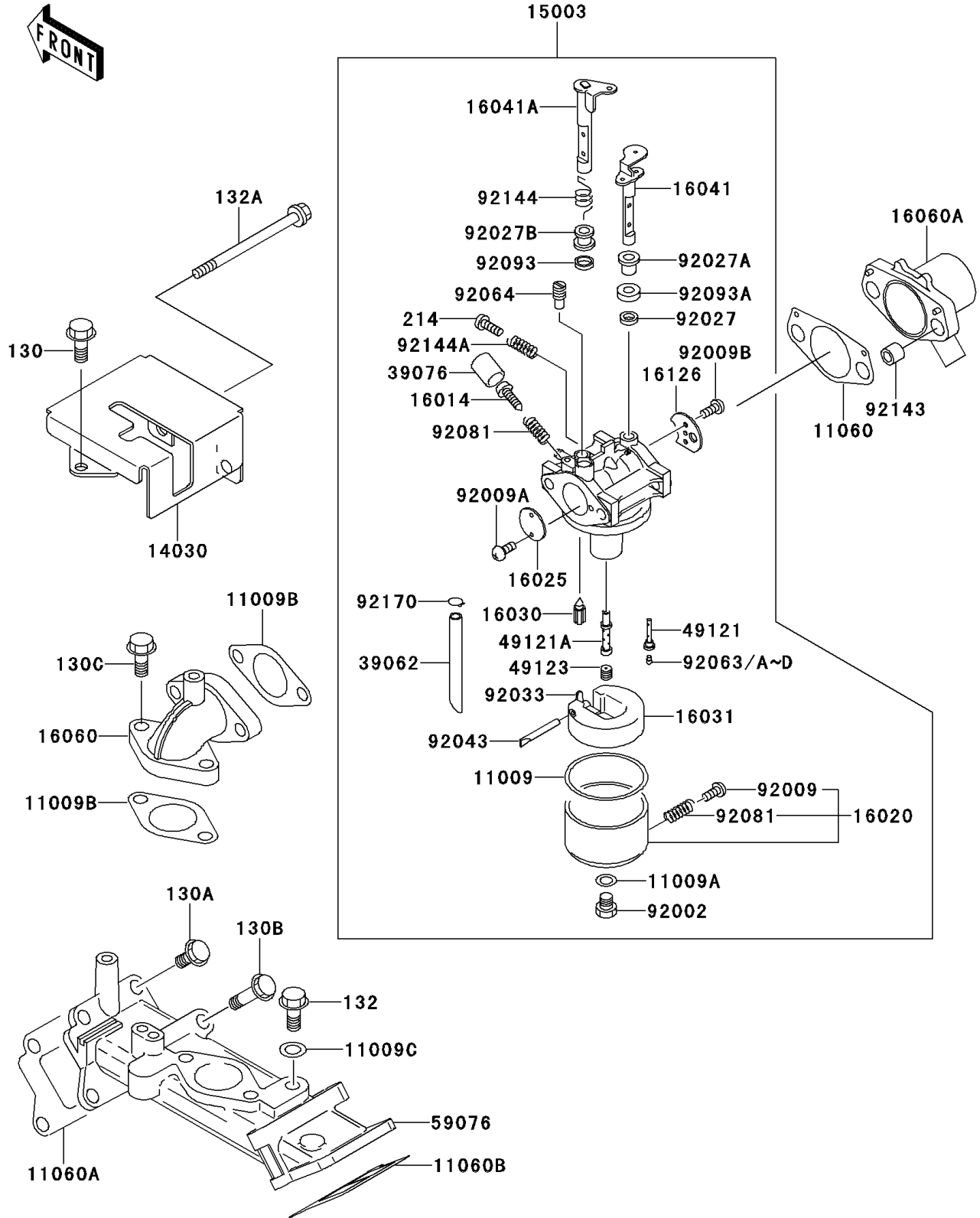


# Mule 2510 4X4 PARTS DIAGRAM

Carburetor(AF620A-509265-)

E1611A



# Mule 2510 4X4 PARTS LIST

Carburetor(AF620A-509265-)

ITEM NAME	PART NUMBER	QUANTITY
GASKET,FLOAT CHAMBER (Ref # 11009)	11009-2024	1
GASKET (Ref # 11009A)	11009-2025	1
GASKET (Ref # 11009B)	11009-2944	2
GASKET (Ref # 11009C)	11009-3028	1
GASKET (Ref # 11060)	11060-2086	1
GASKET,INTAKE MANIFOLD (Ref # 11060A)	11060-2087	1
GASKET,INTAKE MANIFOLD (Ref # 11060B)	11060-2088	1
COVER-CARBURETOR,F.BLACK (Ref # 14030)	14030-2058-9H	1
CARBURETOR-ASSY (Ref # 15003)	15003-2509	1
SCREW-PILOT AIR (Ref # 16014)	16014-2076	1
CHAMBER-FLOAT (Ref # 16020)	16020-2094	1
VALVE-THROTTLE (Ref # 16025)	16025-2168	1
VALVE-FLOAT (Ref # 16030)	16030-2067	1
FLOAT (Ref # 16031)	16031-2066	1
SHAFT-CARBURETOR (Ref # 16041)	16041-2220	1
SHAFT-CARBURETOR (Ref # 16041A)	16041-2239	1
PIPE-INTAKE (Ref # 16060)	16060-2175	1
PIPE-INTAKE (Ref # 16060A)	16060-2176	1
VALVE,CHOKE (Ref # 16126)	16126-2193	1
HOSE-COOLING (Ref # 39062)	39062-2060	1
LIMITER (Ref # 39076)	39076-2053	1
NOZZLE-MAIN (Ref # 49121)	49121-2101	1
NOZZLE-MAIN (Ref # 49121A)	49121-2185	1
HOLDER-MAIN JET (Ref # 49123)	49123-2065	1
MANIFOLD-INTAKE (Ref # 59076)	59076-2062	1
BOLT,MAIN JET (Ref # 92002)	92002-2009	1
SCREW,DRAIN (Ref # 92009)	92009-2015	1
SCREW,THROTTLE VALVE (Ref # 92009A)	92009-2080	2
SCREW,CHOKE VALVE (Ref # 92009B)	92009-2081	2

# Mule 2510 4X4 PARTS LIST

Carburetor(AF620A-509265-)

ITEM NAME	PART NUMBER	QUANTITY
COLLAR (Ref # 92027)	92027-2003	1
COLLAR (Ref # 92027A)	92027-2004	1
COLLAR,THROTTLE SHAFT (Ref # 92027B)	92027-2025	1
RING-SNAP (Ref # 92033)	92033-2067	1
PIN,FLOAT (Ref # 92043)	92043-2006	1
JET-MAIN,#110A (Ref # 92063)	92063-2267	1
JET-MAIN,#107.5A (Ref # 92063A)	92063-2270	1
JET-MAIN,#105A (Ref # 92063B)	92063-2271	1
BOLT-FLANGED,6X10 (Ref # 130)	130B0610	1
BOLT-FLANGED,6X20 (Ref # 130A)	130B0620	5
BOLT-FLANGED,6X45 (Ref # 130B)	130B0645	3
BOLT-FLANGED,8X20 (Ref # 130C)	130B0820	2
BOLT-FLANGED-SMALL,8X12 (Ref # 132)	132J0812	1
BOLT-FLANGED-SMALL (Ref # 132A)	132J0880	2
SCREW-PAN+- (Ref # 214)	214B0414	1
JET-MAIN,#112.5A (Ref # 92063C)	92063-2305	1
JET-MAIN,#115A (Ref # 92063D)	92063-2314	1
JET-PILOT,#40 (Ref # 92064)	92064-2113	1
SPRING (Ref # 92081)	92081-2009	2
SEAL (Ref # 92093)	92093-2082	1
SEAL (Ref # 92093A)	92093-2101	1
COLLAR,8.2X10X8.5 (Ref # 92143)	92143-2201	2
SPRING (Ref # 92144)	92144-2339	1
SPRING (Ref # 92144A)	92144-2342	1
CLAMP (Ref # 92170)	92170-2023	1