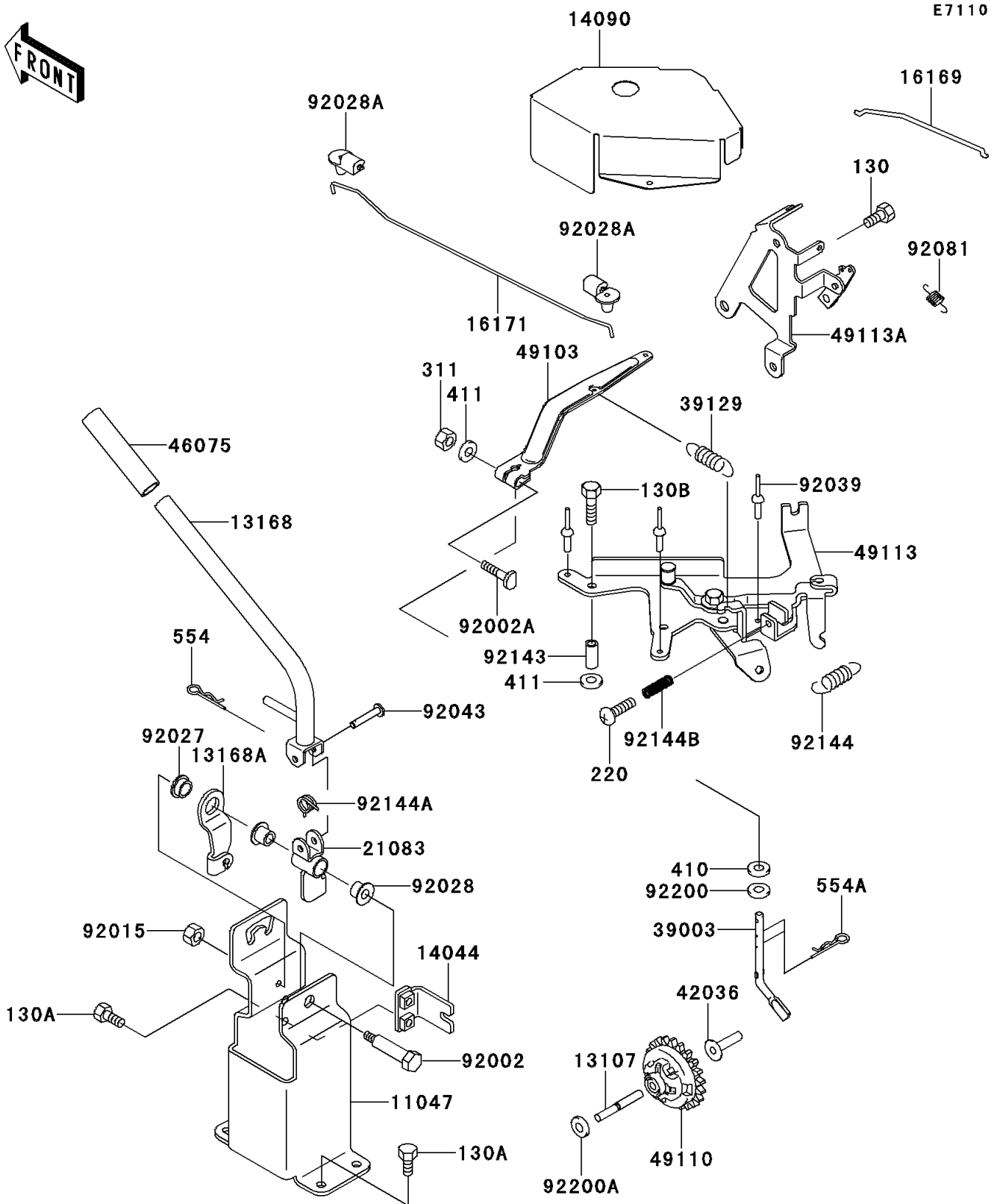


Mule 2510 4X4 PARTS DIAGRAM

Control



Mule 2510 4X4 PARTS LIST

Control

| ITEM NAME | PART NUMBER | QUANTITY |
|--|-------------|----------|
| BOLT-FLANGED,8X16 (Ref # 130) | 130B0816 | 1 |
| BOLT-FLANGED,6X14 (Ref # 130A) | 130D0614 | 6 |
| BOLT-FLANGED,6X55 (Ref # 130B) | 130G0655 | 2 |
| SCREW-PAN-CROS (Ref # 220) | 220B0522 | 1 |
| NUT-HEX,6MM (Ref # 311) | 311B0600 | 1 |
| WASHER-PLAIN-SMALL,6MM (Ref # 410) | 410B0600 | 1 |
| WASHER-PLAIN,6MM (Ref # 411) | 411B0600 | 3 |
| PIN-SNAP (Ref # 554) | 554A0500 | 1 |
| BRACKET (Ref # 11047) | 11047-1882 | 1 |
| SHAFT (Ref # 13107) | 13107-2235 | 1 |
| LEVER (Ref # 13168) | 13168-1424 | 1 |
| LEVER,CHANGE 2WD/4WD (Ref # 13168A) | 13168-1515 | 1 |
| HOLDER-CABLE (Ref # 14044) | 14044-1077 | 1 |
| COVER,CONTROL PANEL (Ref # 14090) | 14090-1335 | 1 |
| LINK-CHOKE (Ref # 16169) | 16169-2113 | 1 |
| LINK,GOVERNOR (Ref # 16171) | 16171-1059 | 1 |
| ARM,CHANGE LEVER (Ref # 21083) | 21083-1102 | 1 |
| ARM-PIVOT,GOVERNOR (Ref # 39003) | 39003-1053 | 1 |
| SPRING-GOVERNOR (Ref # 39129) | 39129-1011 | 1 |
| SLEEVE (Ref # 42036) | 42036-2060 | 1 |
| GRIP,PARKING BRAKE LEVER (Ref # 46075) | 46075-1062 | 1 |
| ARM-GOVERNOR (Ref # 49103) | 49103-1055 | 1 |
| GOVERNOR-ASSY (Ref # 49110) | 49110-1081 | 1 |
| PANEL-COMP-CONTROL (Ref # 49113) | 49113-1056 | 1 |
| PANEL-COMP-CONTROL (Ref # 49113A) | 49113-2143 | 1 |
| BOLT (Ref # 92002) | 92002-1984 | 1 |
| BOLT,6X28 (Ref # 92002A) | 92002-2269 | 1 |
| NUT,LOCK,FLANGED,6MM (Ref # 92015) | 92015-1675 | 1 |
| COLLAR,L=5 (Ref # 92027) | 92027-1029 | 1 |

Mule 2510 4X4 PARTS LIST

Control

| ITEM NAME | PART NUMBER | QUANTITY |
|---|-------------|----------|
| BUSHING (Ref # 92028) | 92028-1507 | 2 |
| BUSHING,GOVERNOR (Ref # 92028A) | 92028-2156 | 2 |
| RIVET,BLIND,4.0X9.2 (Ref # 92039) | 92039-1163 | 3 |
| PIN,5X27.5 (Ref # 92043) | 92043-1434 | 1 |
| SPRING,BRAKE LEVER RETURN (Ref # 92081) | 92081-1922 | 1 |
| COLLAR,6.8X10X42 (Ref # 92143) | 92143-1072 | 2 |
| SPRING,CONTROL (Ref # 92144) | 92144-1410 | 1 |
| SPRING,LEVER (Ref # 92144A) | 92144-1428 | 1 |
| SPRING (Ref # 92144B) | 92144-2266 | 1 |
| WASHER,6.5X11.5X2.0 (Ref # 92200) | 92200-2029 | 1 |
| WASHER,6.2X20X0.5 (Ref # 92200A) | 92200-2036 | 1 |
| PIN-SNAP (Ref # 554A) | 554A0600 | 2 |