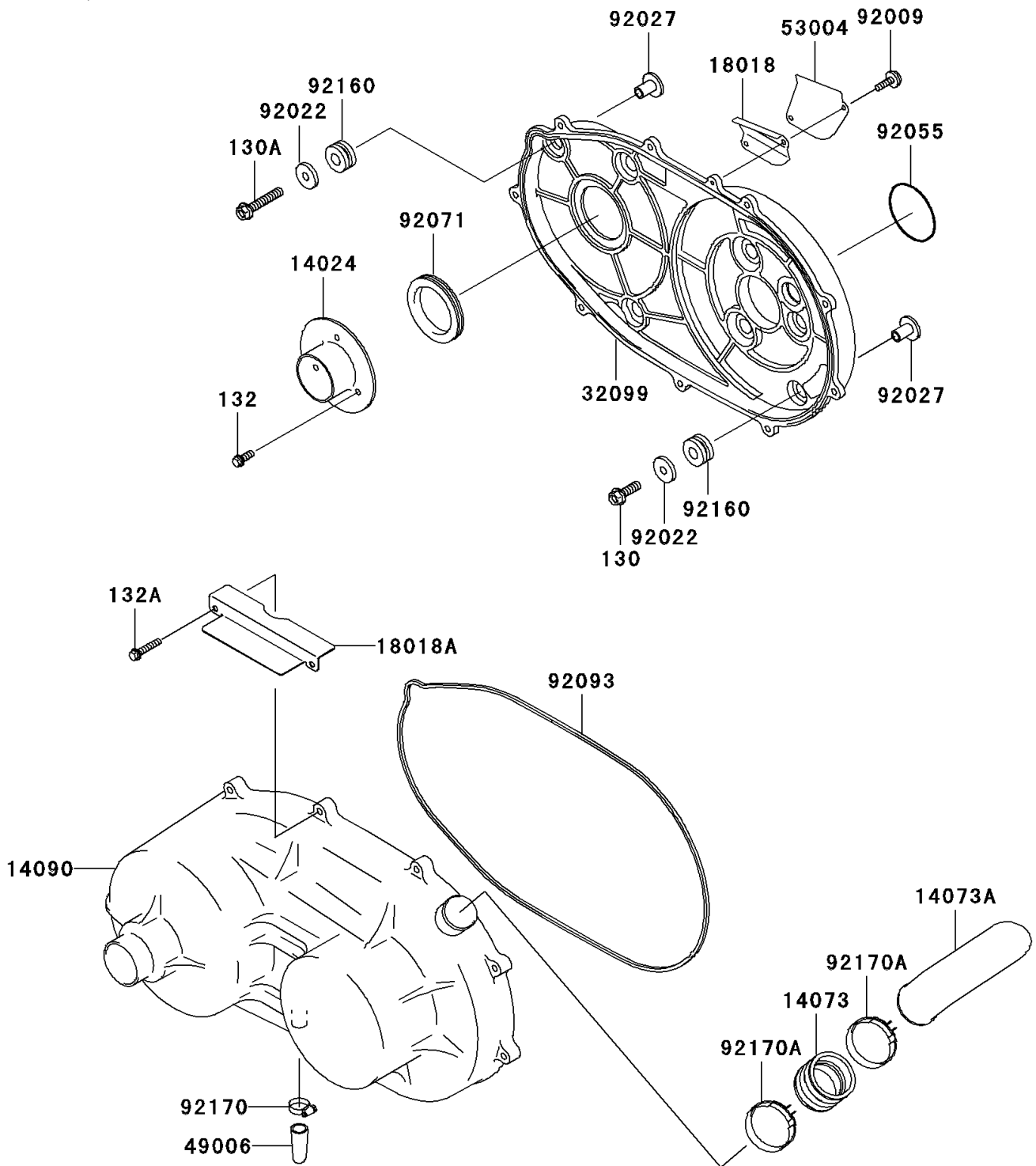


# Mule 3000 PARTS DIAGRAM

Converter Cover/Drive Belt

E1393



# Mule 3000 PARTS LIST

## Converter Cover/Drive Belt

| ITEM NAME                            | PART NUMBER | QUANTITY |
|--------------------------------------|-------------|----------|
| BOLT-FLANGED,8X25,BLACK (Ref # 130)  | 130J0825    | 6        |
| BOLT-FLANGED,8X45 (Ref # 130A)       | 130J0845    | 1        |
| BOLT-FLANGED-SMALL (Ref # 132)       | 132G0616    | 3        |
| BOLT-FLANGED-SMALL (Ref # 132A)      | 132J0630    | 9        |
| COVER,FAN (Ref # 14024)              | 14024-1554  | 1        |
| DUCT (Ref # 14073)                   | 14073-1324  | 1        |
| DUCT,CONVERTER OUTLET (Ref # 14073A) | 14073-1573  | 1        |
| COVER,BELT CONVERTER (Ref # 14090)   | 14090-1239  | 1        |
| PLATE-HEAT GUARD (Ref # 18018)       | 18018-1092  | 1        |
| PLATE-HEAT GUARD (Ref # 18018A)      | 18018-1118  | 1        |
| CASE,BELT CONVERTER (Ref # 32099)    | 32099-1140  | 1        |
| BOOT (Ref # 49006)                   | 49006-1351  | 1        |
| MAT,GUARD PLATE (Ref # 53004)        | 53004-1079  | 1        |
| SCREW,TAPPING,5X10 (Ref # 92009)     | 92009-1332  | 2        |
| WASHER,8.5X26X0.8 (Ref # 92022)      | 92022-101   | 7        |
| COLLAR (Ref # 92027)                 | 92027-4015  | 7        |
| RING-O,CRANKCASE SIDE (Ref # 92055)  | 92055-1395  | 1        |
| GROMMET,CONVERTER CASE (Ref # 92071) | 92071-1212  | 1        |
| SEAL (Ref # 92093)                   | 92093-1526  | 1        |
| DAMPER (Ref # 92160)                 | 92160-1012  | 7        |
| CLAMP (Ref # 92170)                  | 92170-1283  | 1        |
| CLAMP (Ref # 92170A)                 | 92170-1448  | 2        |