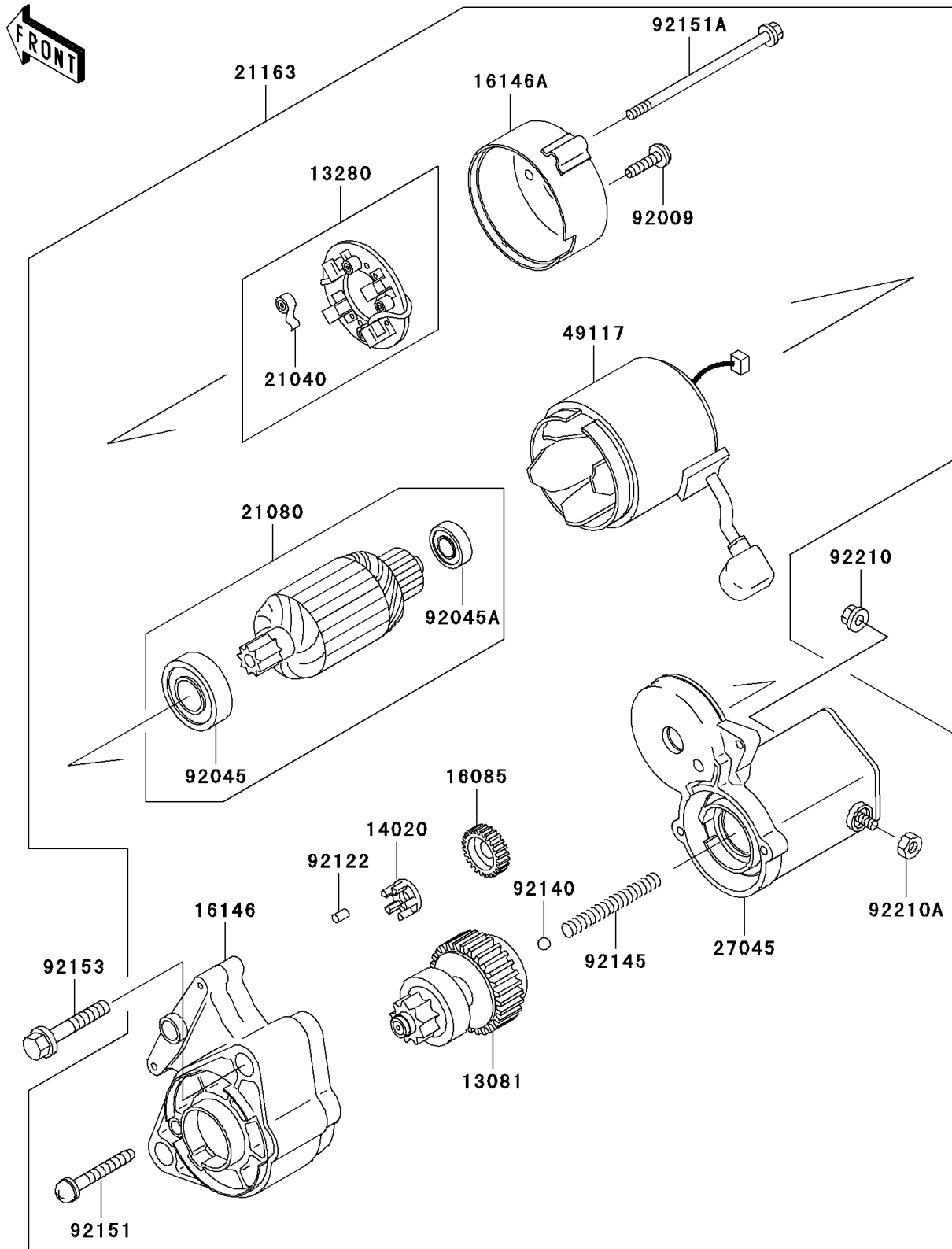


Mule 3010 Diesel 4X4 PARTS DIAGRAM

Starter Motor

E1840



Mule 3010 Diesel 4X4 PARTS LIST

Starter Motor

| ITEM NAME | PART NUMBER | QUANTITY |
|--|-------------|----------|
| CLUTCH-ASSY,STARTER (Ref # 13081) | 13081-1584 | 1 |
| HOLDER,STARTER BRUSH (Ref # 13280) | 13280-1172 | 1 |
| RETAINER (Ref # 14020) | 14020-1108 | 1 |
| GEAR,STARTER IDLE (Ref # 16085) | 16085-1341 | 1 |
| COVER-ASSY,STARTER DRIVE (Ref # 16146) | 16146-1212 | 1 |
| COVER-ASSY,STARTER END (Ref # 16146A) | 16146-1213 | 1 |
| SPRING-BRUSH (Ref # 21040) | 21040-1058 | 4 |
| ARMATURE,STARTER (Ref # 21080) | 21080-1051 | 1 |
| STARTER-ELECTRIC (Ref # 21163) | 21163-1299 | 1 |
| SWITCH-ASSY,MAGNETIC (Ref # 27045) | 27045-1075 | 1 |
| YOKE,STARTER (Ref # 49117) | 49117-1094 | 1 |
| SCREW (Ref # 92009) | 92009-1920 | 2 |
| BEARING-BALL,6002T1XZCE (Ref # 92045) | 92045-1396 | 1 |
| BEARING-BALL,608ZMC3E (Ref # 92045A) | 92045-1397 | 1 |
| ROLLER,IDLE GEAR (Ref # 92122) | 92122-1210 | 5 |
| BALL (Ref # 92140) | 92140-1065 | 1 |
| SPRING (Ref # 92145) | 92145-1311 | 1 |
| BOLT (Ref # 92151) | 92151-1713 | 2 |
| BOLT (Ref # 92151A) | 92151-1714 | 2 |
| BOLT (Ref # 92153) | 92153-0487 | 2 |
| NUT,8MM (Ref # 92210) | 92210-1219 | 1 |
| NUT (Ref # 92210A) | 92210-1231 | 1 |