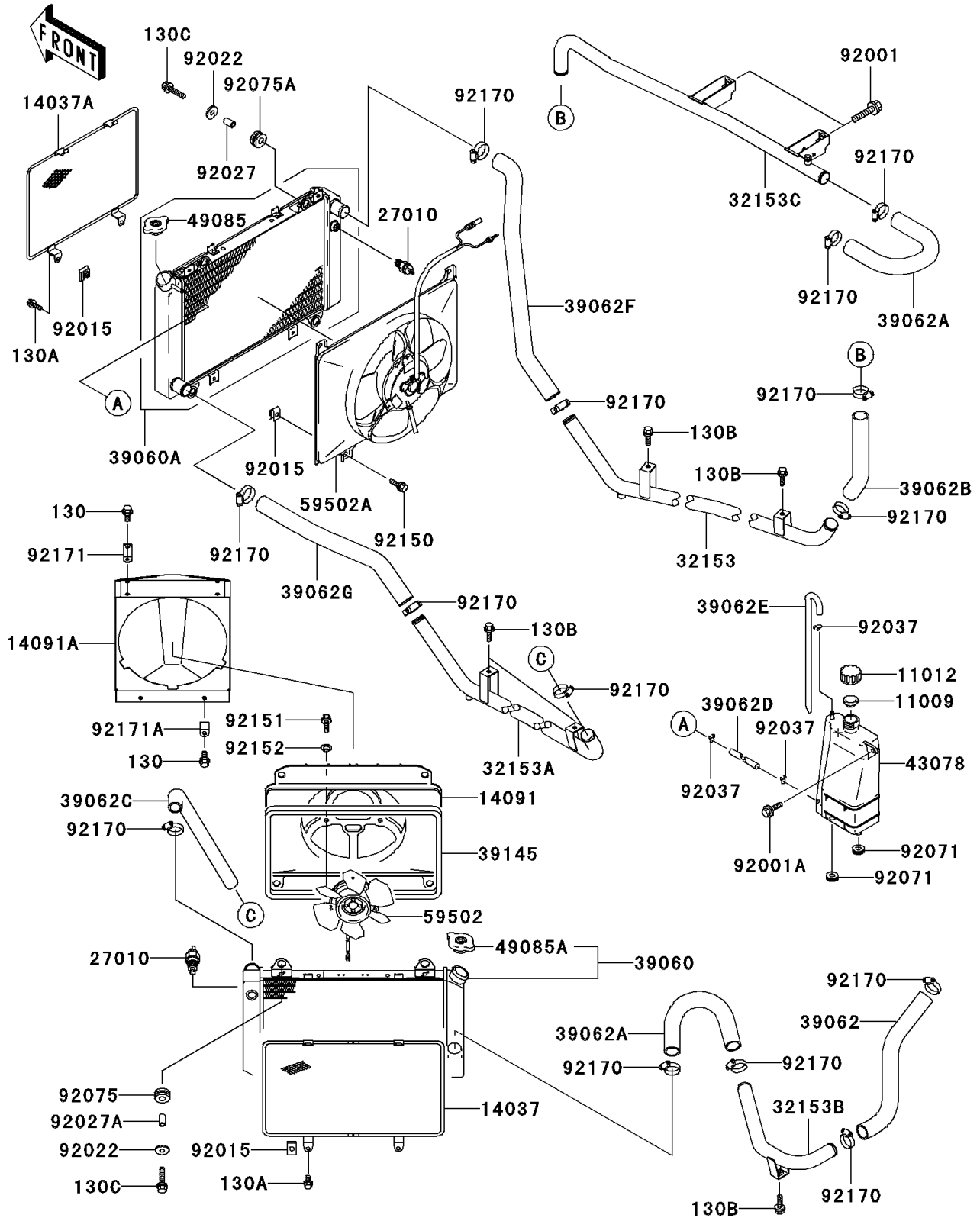


Mule 3010 Diesel 4X4 PARTS DIAGRAM

Radiator

E3032



Mule 3010 Diesel 4X4 PARTS LIST

Radiator

ITEM NAME	PART NUMBER	QUANTITY
GASKET,RESERVOIR TANK CAP (Ref # 11009)	11009-1145	1
CAP (Ref # 11012)	11012-1084	1
SCREEN (Ref # 14037)	14037-1258	1
SCREEN (Ref # 14037A)	14037-1284	1
COVER,SHROUD (Ref # 14091)	14091-1135	1
COVER (Ref # 14091A)	14091-1216	1
SWITCH,FAN (Ref # 27010)	27010-1317	2
PIPE,RH (Ref # 32153)	32153-1056	1
PIPE,LH,FRONT (Ref # 32153A)	32153-1255	1
PIPE,LH,REAR (Ref # 32153B)	32153-1256	1
PIPE (Ref # 32153C)	32153-1933	1
RADIATOR (Ref # 39060)	39060-1184	1
RADIATOR (Ref # 39060A)	39060-1187	1
HOSE-COOLING (Ref # 39062)	39062-0032	1
HOSE-COOLING (Ref # 39062A)	39062-1797	2
HOSE-COOLING (Ref # 39062B)	39062-1799	1
HOSE-COOLING (Ref # 39062C)	39062-1826	1
HOSE-COOLING,5.5X10.5X600 (Ref # 39062D)	39062-1829	1
HOSE-COOLING,DRAIN (Ref # 39062E)	39062-1830	1
HOSE-COOLING (Ref # 39062F)	39062-1834	1
HOSE-COOLING (Ref # 39062G)	39062-1835	1
TRIM-SEAL (Ref # 39145)	39145-1119	1
RESERVOIR (Ref # 43078)	43078-1185	1
CAP-ASSY-PRESSURE (Ref # 49085)	49085-1066	1
CAP-ASSY-PRESSURE (Ref # 49085A)	49085-1068	1
FAN-ASSY (Ref # 59502)	59502-1134	1
FAN-ASSY (Ref # 59502A)	59502-1137	1
BOLT,FLANGED,8X45 (Ref # 92001)	92001-1613	2
BOLT,W/P,6X16 (Ref # 92001A)	92001-1860	1

Mule 3010 Diesel 4X4 PARTS LIST

Radiator

ITEM NAME	PART NUMBER	QUANTITY
NUT (Ref # 92015)	92015-1487	8
WASHER,8.5X20X1.6,BLACK (Ref # 92022)	92022-1317	8
COLLAR,8.8X12X10.7 (Ref # 92027)	92027-102	4
COLLAR,8.2X10.5X15.6 (Ref # 92027A)	92027-1763	4
CLAMP,TUBE (Ref # 92037)	92037-147	3
GROMMET (Ref # 92071)	92071-1115	2
DAMPER,RUBBER (Ref # 92075)	92075-1123	4
DAMPER (Ref # 92075A)	92075-294	4
BOLT,6X12 (Ref # 92150)	92150-1186	4
BOLT,5X12 (Ref # 92151)	92151-1305	3
COLLAR (Ref # 92152)	92152-1241	3
BOLT-FLANGED,6X10,BLACK (Ref # 130)	130J0610	6
BOLT-FLANGED (Ref # 130A)	130J0612	4
BOLT-FLANGED,6X14,BLACK (Ref # 130B)	130J0614	5
BOLT-FLANGED,8X30 (Ref # 130C)	130J0830	8
CLAMP,COOLING HOSE (Ref # 92170)	92170-1284	14
CLAMP,UPP (Ref # 92171)	92171-1186	2
CLAMP,LWR (Ref # 92171A)	92171-1187	2