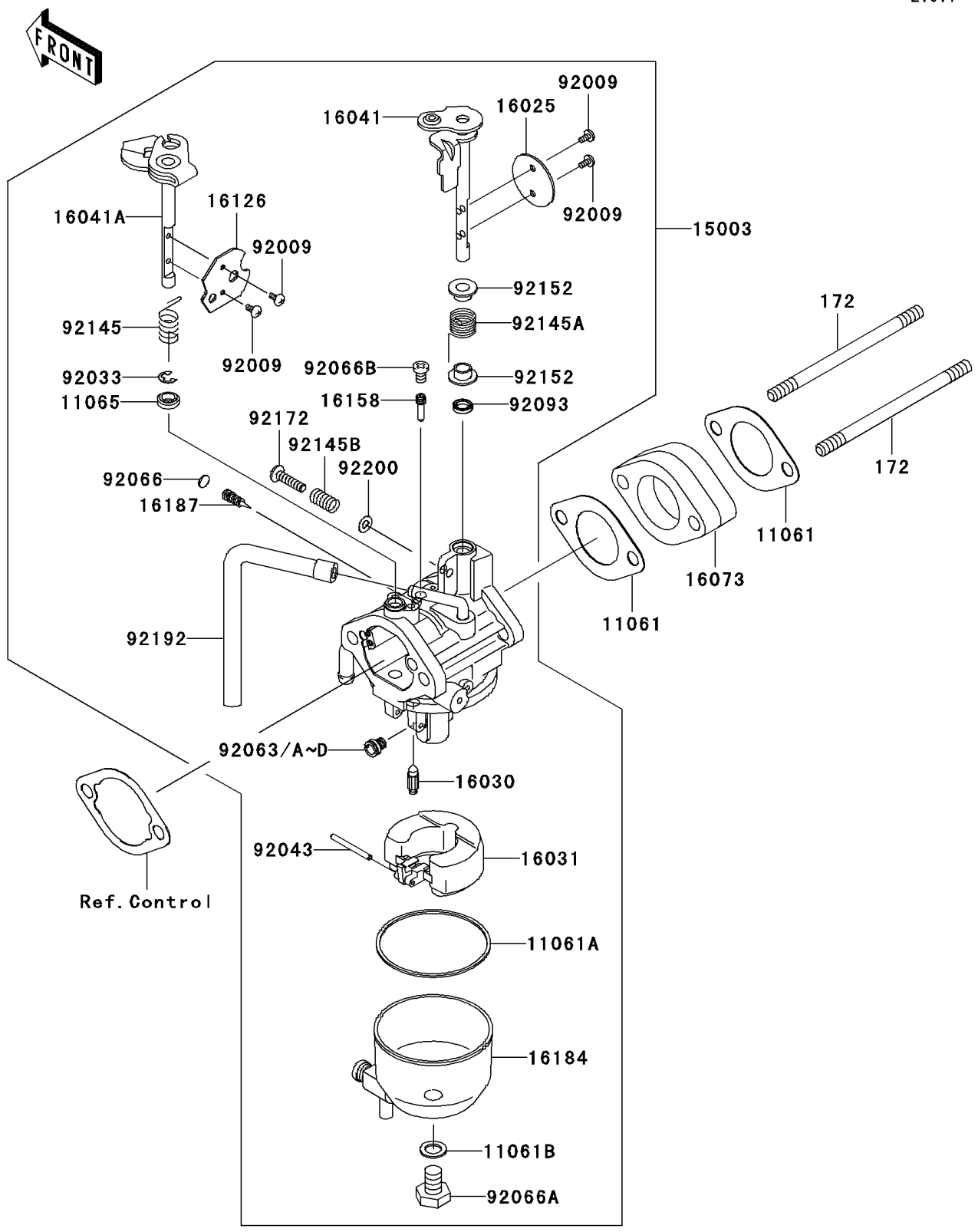


Mule 610 4x4 Hardwoods Green HD PARTS DIAGRAM

Carburetor

E1611



Mule 610 4x4 Hardwoods Green HD PARTS LIST

Carburetor

ITEM NAME	PART NUMBER	QUANTITY
BOLT-STUD,6X95 (Ref # 172)	172G0695	2
GASKET,HEAD-CARB (Ref # 11061)	11061-7027	2
GASKET,FLOAT CHAMBER (Ref # 11061A)	11061-7044	1
GASKET,CHAMBER (Ref # 11061B)	11061-7045	1
CAP (Ref # 11065)	11065-7012	1
CARBURETOR-ASSY (Ref # 15003)	15003-2943	1
VALVE-THROTTLE (Ref # 16025)	16025-7008	1
VALVE-FLOAT (Ref # 16030)	16030-7004	1
FLOAT (Ref # 16031)	16031-7004	1
SHAFT-CARBURETOR (Ref # 16041)	16041-2261	1
SHAFT-CARBURETOR (Ref # 16041A)	16041-2262	1
INSULATOR (Ref # 16073)	16073-2229	1
VALVE (Ref # 16126)	16126-2242	1
JET-SLOW,#54 (Ref # 16158)	16158-2051	1
CHAMBER-ASSY-FLOAT (Ref # 16184)	16184-7018	1
NEEDLE-JET (Ref # 16187)	16187-7002	1
SCREW (Ref # 92009)	92009-2049	4
RING-SNAP (Ref # 92033)	92033-7007	1
PIN (Ref # 92043)	92043-7016	1
JET-MAIN,#99 (Ref # 92063)	92063-2458	1
JET-MAIN,#105 (Ref # 92063A)	92063-7013	1
JET-MAIN,#102 (Ref # 92063B)	92063-7014	1
JET-MAIN,#109 (Ref # 92063C)	92063-7044	1
JET-MAIN,#112 (Ref # 92063D)	92063-7045	1
PLUG (Ref # 92066)	92066-7009	1
PLUG (Ref # 92066A)	92066-7020	1
PLUG (Ref # 92066B)	92066-7021	1
SEAL,D=5.9 (Ref # 92093)	92093-7001	1
SPRING (Ref # 92145)	92145-2151	1

Mule 610 4x4 Hardwoods Green HD PARTS LIST

Carburetor

ITEM NAME	PART NUMBER	QUANTITY
SPRING (Ref # 92145A)	92145-2152	1
SPRING (Ref # 92145B)	92145-7039	1
COLLAR (Ref # 92152)	92152-7008	2
SCREW (Ref # 92172)	92172-7007	1
TUBE (Ref # 92192)	92192-2085	1
WASHER (Ref # 92200)	92200-7025	1