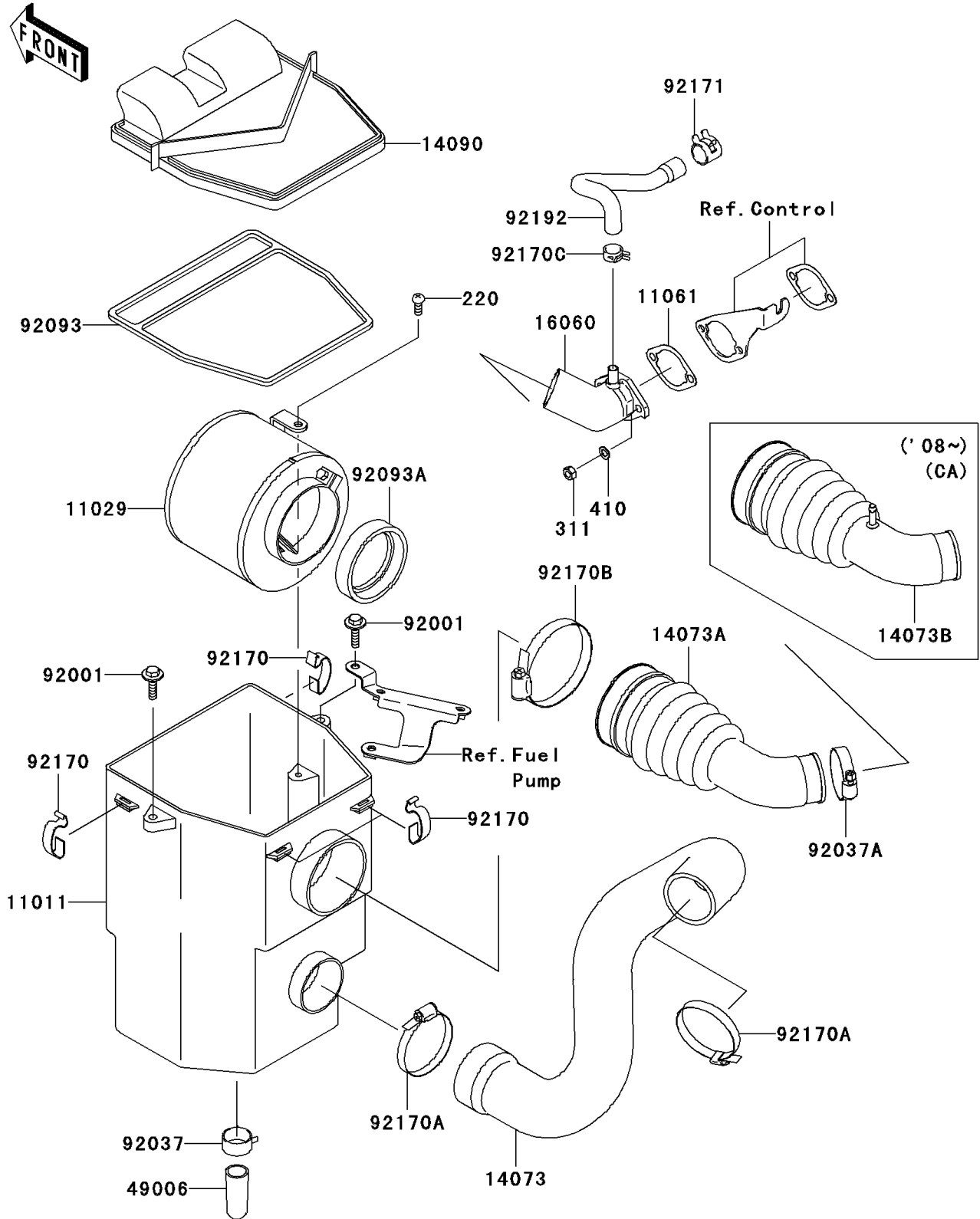


2008 Mule 600 PARTS DIAGRAM

Air Cleaner

E1130



2008 Mule 600 PARTS LIST

Air Cleaner

| ITEM NAME | PART NUMBER | QUANTITY |
|--|-------------|----------|
| SCREW-PAN-CROSS,6X14 (Ref # 220) | 220AA0614 | 1 |
| NUT-HEX,6MM (Ref # 311) | 311AA0600 | 2 |
| WASHER-PLAIN-SMALL (Ref # 410) | 410AA0600 | 2 |
| CASE-AIR FILTER (Ref # 11011) | 11011-1367 | 1 |
| ELEMENT-ASSY-AIR FILTER (Ref # 11029) | 11029-1004 | 1 |
| GASKET (Ref # 11061) | 11061-7026 | 1 |
| DUCT,FRAME-AIR FILTER (Ref # 14073) | 14073-0072 | 1 |
| COVER,AIR FILTER (Ref # 14090) | 14090-1106 | 1 |
| PIPE-INTAKE (Ref # 16060) | 16060-2210 | 1 |
| BOOT (Ref # 49006) | 49006-1351 | 1 |
| BOLT,6X25,W/WASHER (Ref # 92001) | 92001-1140 | 2 |
| CLAMP,HOSE CLIP (Ref # 92037) | 92037-1460 | 1 |
| CLAMP (Ref # 92037A) | 92037-506 | 1 |
| SEAL,AIR FILTER (Ref # 92093) | 92093-1241 | 1 |
| SEAL,DUST (Ref # 92093A) | 92093-1322 | 1 |
| CLAMP,AIR FILTER (Ref # 92170) | 92170-1211 | 4 |
| CLAMP (Ref # 92170A) | 92170-1674 | 2 |
| CLAMP (Ref # 92170B) | 92170-1679 | 1 |
| CLAMP (Ref # 92170C) | 92170-7003 | 1 |
| CLAMP (Ref # 92171) | 92171-7013 | 1 |
| TUBE,BREATHER (Ref # 92192) | 92192-2084 | 1 |
| DUCT,AIR FILTER-IN.PIPE (Ref # 14073A) | 14073-0074 | 1 |
| DUCT,AIR FILTER-IN.PIPE (Ref # 14073B) | 14073-0193 | 1 |