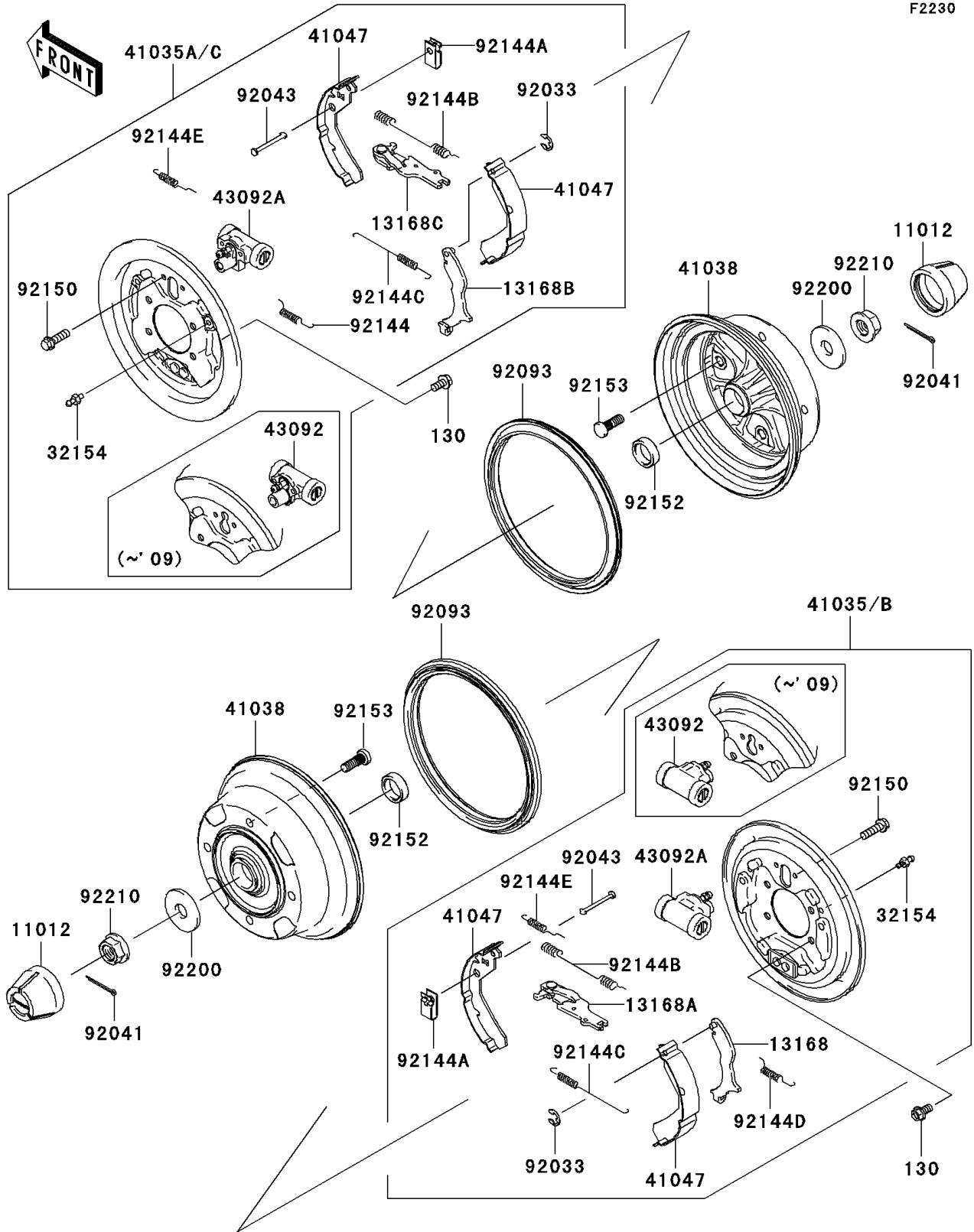


# 2010 Mule 610 4x4 PARTS DIAGRAM

Front Hubs/Brakes



## 2010 Mule 610 4x4 PARTS LIST

### Front Hubs/Brakes

| ITEM NAME                             | PART NUMBER | QUANTITY |
|---------------------------------------|-------------|----------|
| BOLT-FLANGED,8X16 (Ref # 130)         | 130CA0816   | 8        |
| CAP,WHEEL (Ref # 11012)               | 11012-1969  | 2        |
| LEVER,BRAKE,LH (Ref # 13168)          | 13168-0065  | 1        |
| LEVER,BRAKE,LH (Ref # 13168A)         | 13168-0066  | 1        |
| LEVER,BRAKE,RH (Ref # 13168B)         | 13168-0067  | 1        |
| LEVER,BRAKE,RH (Ref # 13168C)         | 13168-0068  | 1        |
| PIPE (Ref # 32154)                    | 32154-0335  | 2        |
| PANEL-ASSY-BRAKE,FR,LH (Ref # 41035B) | 41035-0057  | 1        |
| PANEL-ASSY-BRAKE,FR,RH (Ref # 41035C) | 41035-0059  | 1        |
| DRUM,FRONT BRAKE (Ref # 41038)        | 41038-0013  | 2        |
| SHOE-ASSY-BRAKE (Ref # 41047)         | 41047-0001  | 4        |
| CYLINDER,BRAKE (Ref # 43092A)         | 43092-0002  | 2        |
| RING-SNAP (Ref # 92033)               | 92033-1279  | 2        |
| COTTER,4.0X35 (Ref # 92041)           | 92041-1053  | 2        |
| PIN,SHOE HOLD (Ref # 92043)           | 92043-1460  | 4        |
| SEAL,BS184.8X13.5-1 (Ref # 92093)     | 92093-0031  | 2        |
| SPRING,RH (Ref # 92144)               | 92144-1608  | 1        |
| SPRING,SHOE HOLD (Ref # 92144A)       | 92144-1609  | 4        |
| SPRING,RETURN,UPP (Ref # 92144B)      | 92144-1612  | 2        |
| SPRING,RETURN,LWR (Ref # 92144C)      | 92144-1613  | 2        |
| SPRING (Ref # 92144D)                 | 92144-1614  | 1        |
| SPRING (Ref # 92144E)                 | 92144-1615  | 2        |
| BOLT,FLANGED,6X10 (Ref # 92150)       | 92150-1664  | 4        |
| COLLAR,25X34X10 (Ref # 92152)         | 92152-0164  | 2        |
| BOLT,10X30 (Ref # 92153)              | 92153-0920  | 8        |
| WASHER,18.5X52X4.5 (Ref # 92200)      | 92200-1474  | 2        |
| NUT,FLANGED,18MM (Ref # 92210)        | 92210-0132  | 2        |