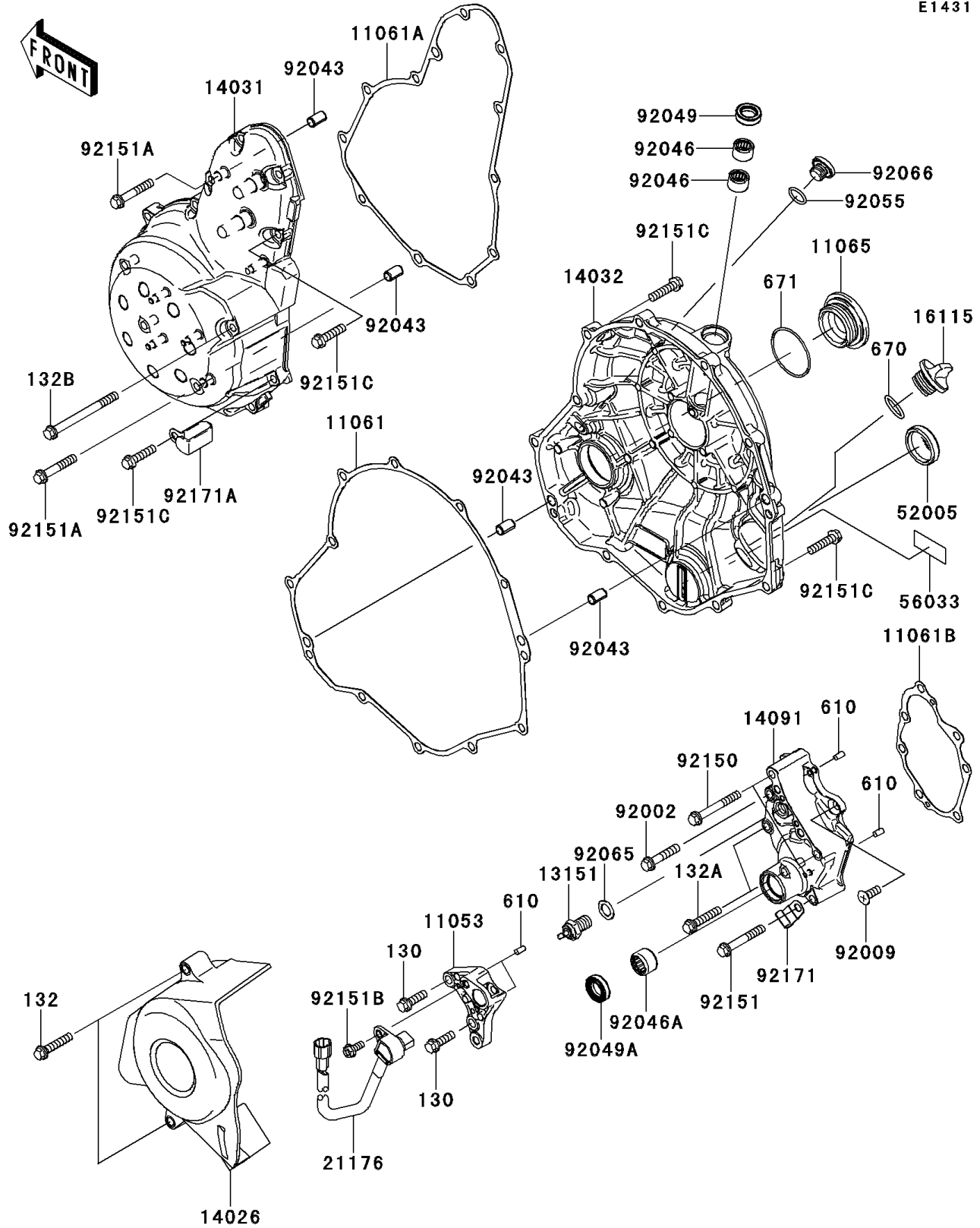


2008 Versys™ PARTS DIAGRAM

Engine Cover(s)

E1431



2008 Versys™ PARTS LIST

Engine Cover(s)

| ITEM NAME | PART NUMBER | QUANTITY |
|--|-------------|----------|
| BOLT-FLANGED,6X20 (Ref # 130) | 130BA0620 | 2 |
| BOLT-FLANGED-SMALL,6X30 (Ref # 132) | 132BB0630 | 2 |
| BOLT-FLANGED-SMALL,6X30 (Ref # 132A) | 132BC0630 | 2 |
| BOLT-FLANGED-SMALL,6X70 (Ref # 132B) | 132BC0670 | 1 |
| ROLLER,4X8 (Ref # 610) | 610A0408 | 4 |
| O RING,20MM (Ref # 670) | 670B2020 | 1 |
| O RING,40MM (Ref # 671) | 671B2540 | 1 |
| BRACKET (Ref # 11053) | 11053-1739 | 1 |
| GASKET,CLUTCH COVER (Ref # 11061) | 11061-0164 | 1 |
| GASKET,GENERATOR COVER (Ref # 11061A) | 11061-0165 | 1 |
| GASKET,TRANSMISSION COVER (Ref # 11061B) | 11061-0166 | 1 |
| CAP (Ref # 11065) | 11065-0182 | 1 |
| SWITCH-COMP,NEUTRAL (Ref # 13151) | 13151-1080 | 1 |
| COVER-CHAIN (Ref # 14026) | 14026-0021 | 1 |
| COVER-GENERATOR (Ref # 14031) | 14031-0078 | 1 |
| COVER-CLUTCH (Ref # 14032) | 14032-0094 | 1 |
| COVER,TRANSMISSION (Ref # 14091) | 14091-0720 | 1 |
| CAP-OIL FILLER (Ref # 16115) | 16115-1053 | 1 |
| SENSOR,SPEED (Ref # 21176) | 21176-0065 | 1 |
| GAUGE,OIL LEVEL (Ref # 52005) | 52005-0071 | 1 |
| LABEL-MANUAL,OIL CAPACITY (Ref # 56033) | 56033-0131 | 1 |
| BOLT,6X30 (Ref # 92002) | 92002-1534 | 1 |
| SCREW,6X16 (Ref # 92009) | 92009-1360 | 1 |
| PIN,6.2X8X14 (Ref # 92043) | 92043-1263 | 4 |
| BEARING-NEEDLE,HK1210 (Ref # 92046) | 92046-1010 | 2 |
| BEARING-NEEDLE,HK1312 (Ref # 92046A) | 92046-1148 | 1 |
| SEAL-OIL,CLUTCH RELEASE (Ref # 92049) | 92049-1475 | 1 |
| SEAL-OIL,TC13225.5 (Ref # 92049A) | 92049-1519 | 1 |
| RING-O,13.0X1.9 (Ref # 92055) | 92055-1011 | 1 |

2008 Versys™ PARTS LIST

Engine Cover(s)

| ITEM NAME | PART NUMBER | QUANTITY |
|--|-------------|----------|
| GASKET,10.5X16X1 (Ref # 92065) | 92065-058 | 1 |
| PLUG,TIMING HOLE (Ref # 92066) | 92066-0088 | 1 |
| BOLT,6X45 (Ref # 92150) | 92150-1884 | 2 |
| BOLT,6X40 (Ref # 92151) | 92151-1131 | 1 |
| BOLT,6X35 (Ref # 92151A) | 92151-1135 | 2 |
| BOLT,FLANGED,5X12 (Ref # 92151B) | 92151-1305 | 1 |
| BOLT,FLANGED-SMALL,6X25 (Ref # 92151C) | 92151-1930 | 21 |
| CLAMP (Ref # 92171) | 92171-0813 | 1 |
| CLAMP (Ref # 92171A) | 92171-0911 | 1 |