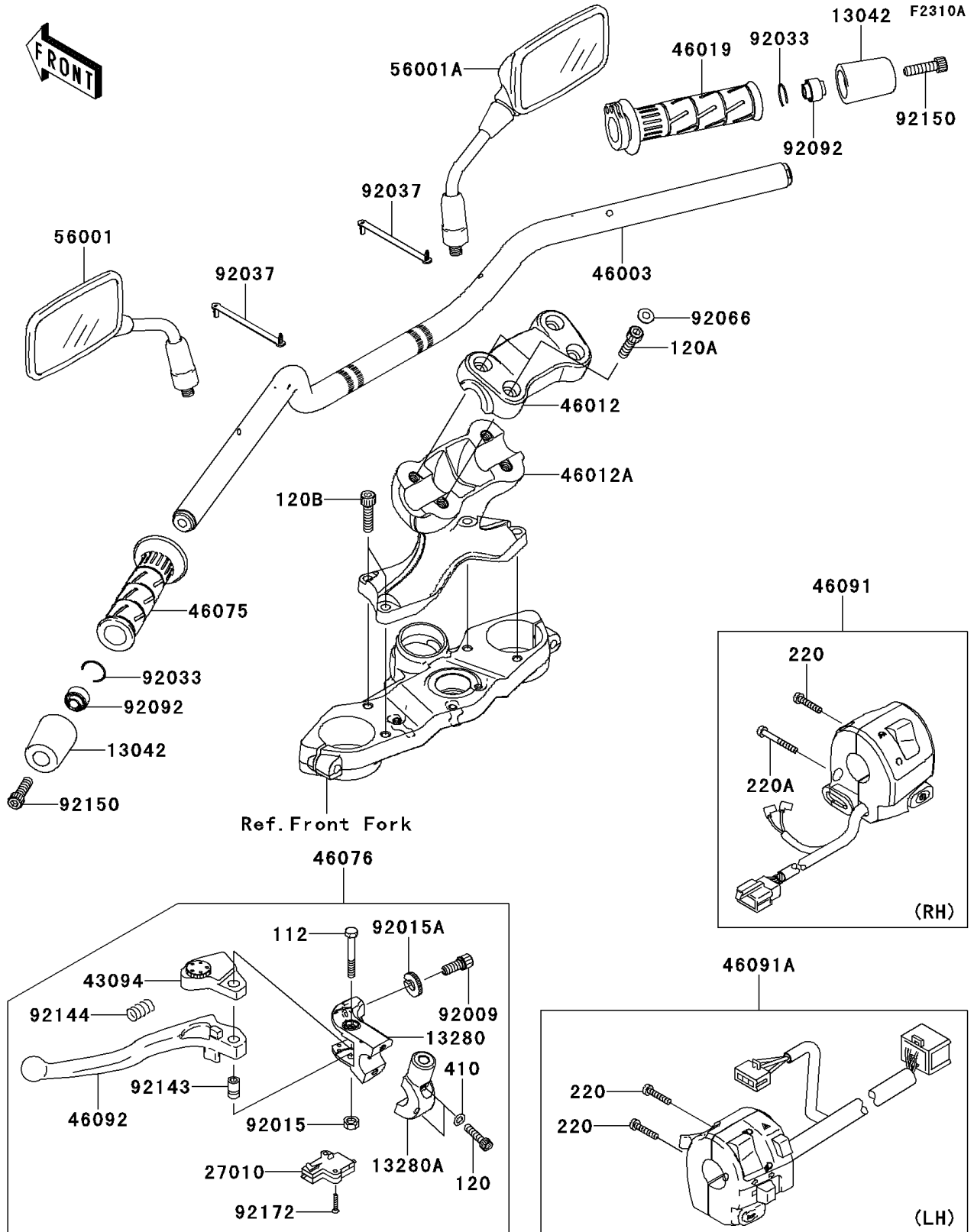


2009 Versys™ PARTS DIAGRAM

Handlebar(A9F)



2009 Versys™ PARTS LIST

Handlebar(A9F)

ITEM NAME	PART NUMBER	QUANTITY
BOLT-UPSET,6X45 (Ref # 112)	112AB0645	1
BOLT-SOCKET,6X25 (Ref # 120)	120CB0625	2
BOLT-SOCKET,8X30 (Ref # 120A)	120CB0830	4
BOLT-SOCKET,8X30 (Ref # 120B)	120CC0830	4
SCREW-PAN-CROS,5X25 (Ref # 220)	220AB0525	3
SCREW-PAN-CROSS,5X40 (Ref # 220A)	220AB0540	1
WASHER-PLAIN-SMALL,6MM (Ref # 410)	410AB0600	2
WEIGHT,HANDLE (Ref # 13042)	13042-1006	2
HOLDER,CLUTCH LEVER (Ref # 13280)	13280-0306	1
HOLDER,CLUTCH LEVER (Ref # 13280A)	13280-0307	1
SWITCH,CLUTCH,BLACK (Ref # 27010)	27010-1094	1
ADJUSTER,CLUTCH LEVER (Ref # 43094)	43094-1053	1
HANDLE,F.P.SILVER (Ref # 46003)	46003-0167-10T	1
HOLDER-HANDLE,UPP,P.SILVER (Ref # 46012)	46012-0029-458	1
HOLDER-HANDLE,LWR,P.SILVER (Ref # 46012A)	46012-0030-458	1
GRIP-ASSY,THROTTLE (Ref # 46019)	46019-0001	1
GRIP,LH (Ref # 46075)	46075-1144	1
LEVER-ASSY-GRIP,CLUTCH (Ref # 46076)	46076-0052	1
HOUSING-ASSY-CONTROL,RH (Ref # 46091)	46091-0088	1
HOUSING-ASSY-CONTROL,LH (Ref # 46091A)	46091-0120	1
LEVER-GRIP,CLUTCH (Ref # 46092)	46092-0031	1
MIRROR-ASSY,LH (Ref # 56001)	56001-0144	1
MIRROR-ASSY,RH (Ref # 56001A)	56001-0145	1
SCREW,CABLE ADJUST,8MM,BLACK (Ref # 92009)	92009-1134	1
NUT,LOCK,6MM,BLACK (Ref # 92015)	92015-1191	1
NUT,CABLE ADJUST LOCK,8MM,BLK (Ref # 92015A)	92015-1197	1
RING-SNAP,OD=22.2 (Ref # 92033)	92033-1102	2
CLAMP,SPEED,L=80.5 (Ref # 92037)	92037-1903	2
PLUG (Ref # 92066)	92066-1281	4

2009 Versys™ PARTS LIST

Handlebar(A9F)

ITEM NAME	PART NUMBER	QUANTITY
BUSHING-RUBBER,HANDLE (Ref # 92092)	92092-1018	2
COLLAR (Ref # 92143)	92143-1379	1
SPRING (Ref # 92144)	92144-1467	1
BOLT,SOCKET,8X30 (Ref # 92150)	92150-1604	2
SCREW,3X16 (Ref # 92172)	92172-0183	2