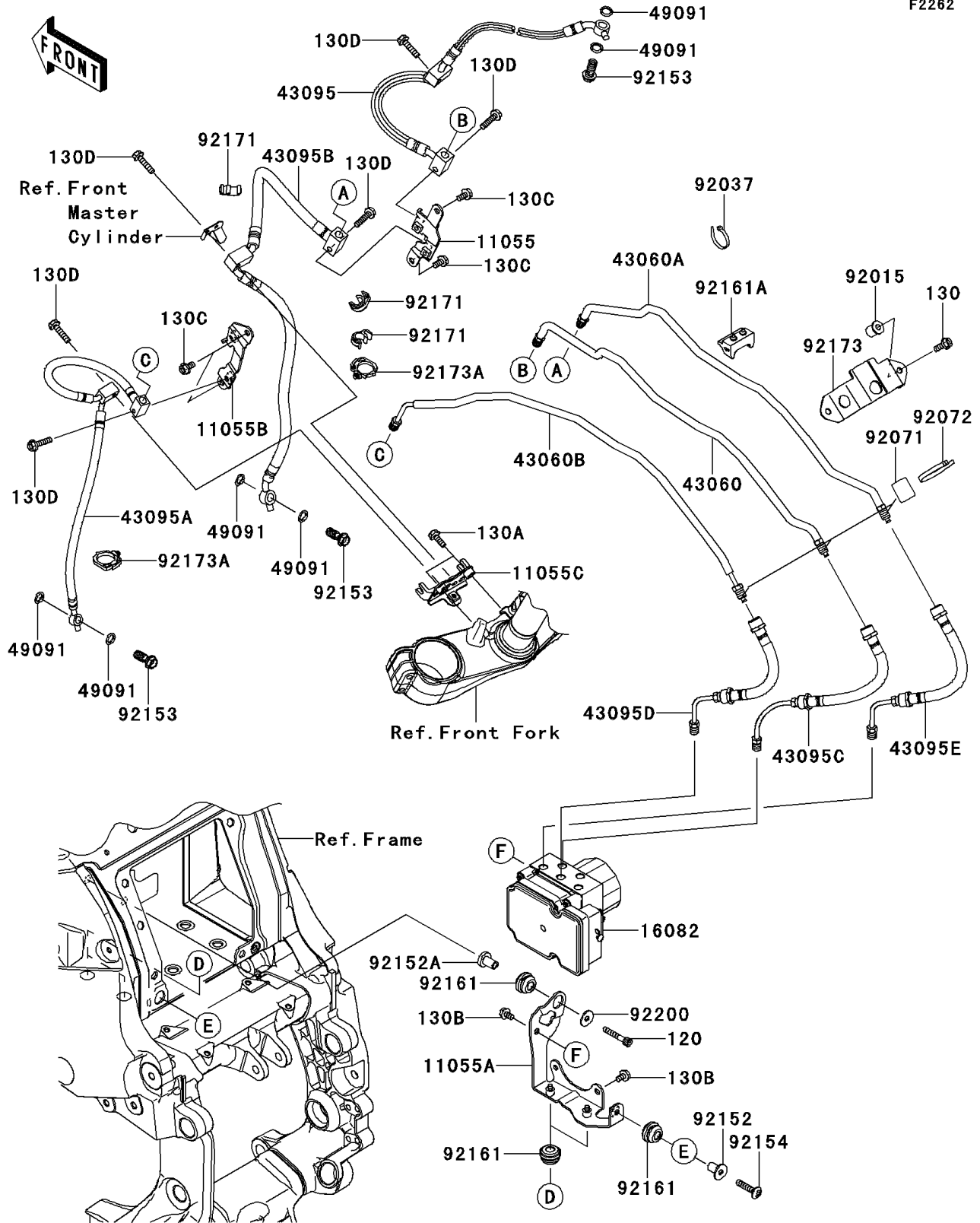


# 2010 Concours® 14 ABS PARTS DIAGRAM

Brake Piping

F2262



## 2010 Concours® 14 ABS PARTS LIST

### Brake Piping

ITEM NAME	PART NUMBER	QUANTITY
BOLT-SOCKET,6X35 (Ref # 120)	120CA0635	1
BOLT-FLANGED,6X16 (Ref # 130)	130BA0616	2
BOLT-FLANGED,6X18 (Ref # 130A)	130BA0618	2
BOLT-FLANGED,6X10 (Ref # 130B)	130BB0610	3
BOLT-FLANGED,6X12 (Ref # 130C)	130BB0612	4
BOLT-FLANGED,6X25 (Ref # 130D)	130BB0625	6
BRACKET,JOINT (Ref # 11055)	11055-0588	1
BRACKET,ABS UNIT (Ref # 11055A)	11055-1712	1
BRACKET,HOSE,LH (Ref # 11055B)	11055-1714	1
BRACKET,UNDER FORK (Ref # 11055C)	11055-1715	1
PUMP-ASSY-OIL,WET TYPE (Ref # 16082)	16082-0041	1
PIPE-BRAKE,HU-FR M/CYLINDER (Ref # 43060)	43060-0059	1
PIPE-BRAKE,HU-FR CALIPER (Ref # 43060A)	43060-0060	1
PIPE-BRAKE,HU-FR CALIPER (Ref # 43060B)	43060-0071	1
HOSE-BRAKE,HU-FR M/CYLINDER (Ref # 43095)	43095-0494	1
HOSE-BRAKE,HU-FR CALIPER LH (Ref # 43095A)	43095-0495	1
HOSE-BRAKE,HU-FR CALIPER RH (Ref # 43095B)	43095-0496	1
HOSE-BRAKE,HU-FR M/CYL.,JNT. (Ref # 43095C)	43095-0558	1
HOSE-BRAKE,HU-CALIPER LH,JNT. (Ref # 43095D)	43095-0559	1
HOSE-BRAKE,HU-CALIPER RH,JNT. (Ref # 43095E)	43095-0560	1
WASHER-SEAL,10.1X14.5X1.5 (Ref # 49091)	49091-0001	6
NUT (Ref # 92015)	92015-1700	2
CLAMP (Ref # 92037)	92037-1173	1
GROMMET (Ref # 92071)	92071-1143	3
BAND,L=148 (Ref # 92072)	92072-3768	3
COLLAR (Ref # 92152)	92152-0346	1
COLLAR (Ref # 92152A)	92152-0347	1
BOLT,OIL,L=23 (Ref # 92153)	92153-0627	3
BOLT,SOCKET,6X30 (Ref # 92154)	92154-0435	1

## 2010 Concours® 14 ABS PARTS LIST

### Brake Piping

ITEM NAME	PART NUMBER	QUANTITY
DAMPER (Ref # 92161)	92161-0315	4
DAMPER,HOSE CLAMP (Ref # 92161A)	92161-0788	1
CLAMP,BRAKE HOSE (Ref # 92171)	92171-1819	3
CLAMP,BRAKE HOSE (Ref # 92173)	92173-0078	1
CLAMP (Ref # 92173A)	92173-0868	2
WASHER,6.5X20X1.6 (Ref # 92200)	92200-0283	1