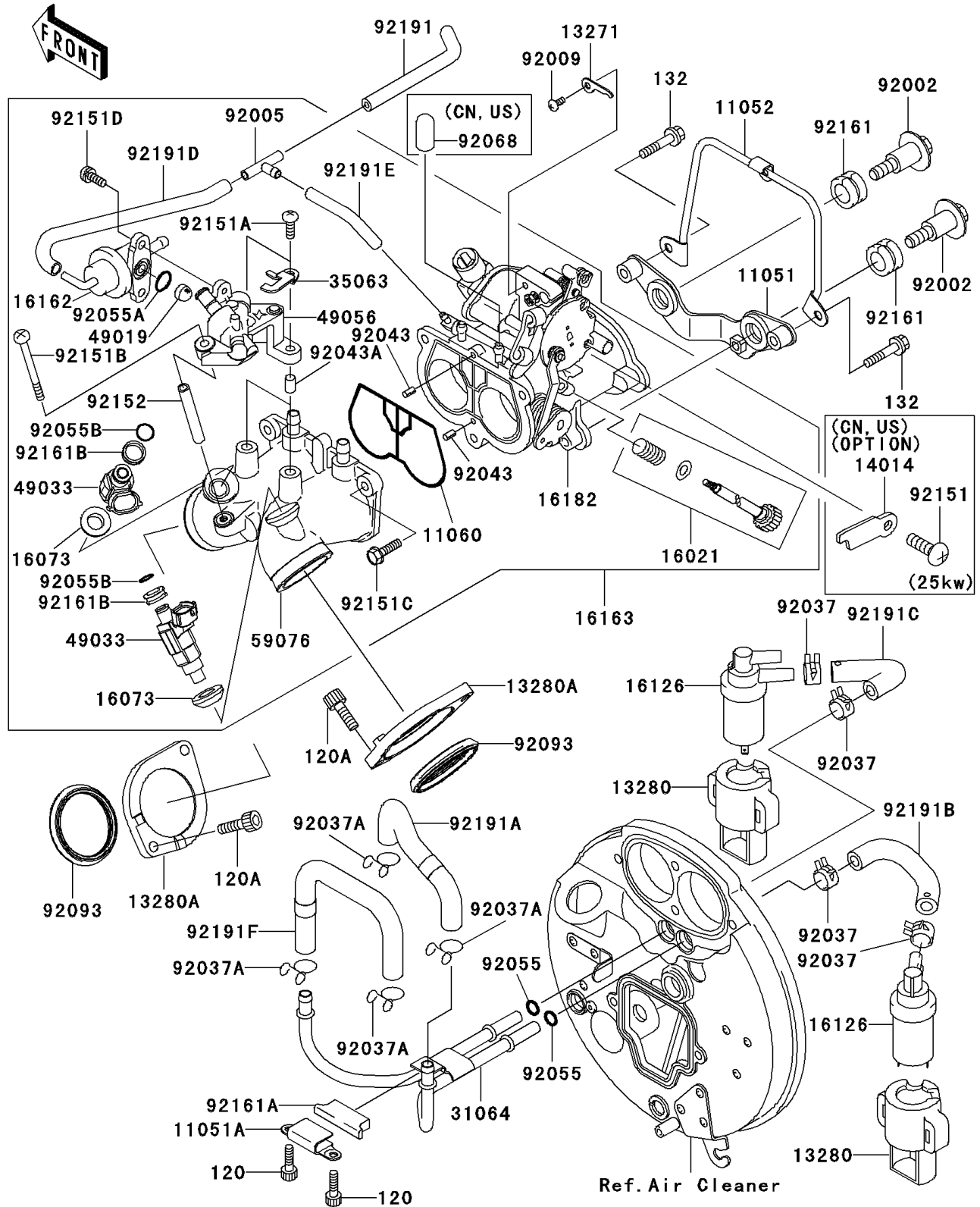


2007 Vulcan 1500 Classic PARTS DIAGRAM

Throttle

E1510



2007 Vulcan 1500 Classic PARTS LIST

Throttle

ITEM NAME	PART NUMBER	QUANTITY
BRACKET (Ref # 11051)	11051-1333	1
BRACKET (Ref # 11051A)	11051-1345	1
BRACKET,HIGH TENSION CORD (Ref # 11052)	11052-1067	1
GASKET,THROTTLE BODY (Ref # 11060)	11060-1928	1
PLATE,STARTER CABLE (Ref # 13271)	13271-1314	1
HOLDER (Ref # 13280)	13280-1139	2
HOLDER (Ref # 13280A)	13280-1154	2
SCREW-THROTTLE STOP (Ref # 16021)	16021-1227	1
INSULATOR (Ref # 16073)	16073-1119	2
VALVE (Ref # 16126)	16126-1372	2
REGULATOR-FUEL (Ref # 16162)	16162-1054	1
THROTTLE-ASSY (Ref # 16163)	16163-1099	1
BODY-THROTTLE (Ref # 16182)	16182-1002	1
PIPE-COMP (Ref # 31064)	31064-1227	1
STAY (Ref # 35063)	35063-1148	1
FILTER-FUEL,STRAINER (Ref # 49019)	49019-3707	1
NOZZLE-INJECTION (Ref # 49033)	49033-1057	2
PIPE-INJECTION (Ref # 49056)	49056-1054	1
MANIFOLD-INTAKE (Ref # 59076)	59076-1110	1
BOLT,FLANGED,6X14X13.5 (Ref # 92002)	92002-1595	2
FITTING (Ref # 92005)	92005-1366	1
SCREW,4X6 (Ref # 92009)	92009-1903	1
CLAMP,HOSE CLIP (Ref # 92037)	92037-1181	4
CLAMP,FUEL TUBE (Ref # 92037A)	92037-1271	4
PIN,THROTTLE BODY (Ref # 92043)	92043-1600	2
PIN,DELIVERY PIPE (Ref # 92043A)	92043-1601	2
RING-O,7.8X3.5 (Ref # 92055)	92055-029	2
RING-O,FUEL REGULATOR (Ref # 92055A)	92055-1620	1
RING-O,INJECTION NOZZLE (Ref # 92055B)	92055-1622	2

2007 Vulcan 1500 Classic PARTS LIST

Throttle

ITEM NAME	PART NUMBER	QUANTITY
SEAL (Ref # 92093)	92093-0072	2
BOLT,5X20 (Ref # 92151A)	92151-1585	2
BOLT,5X75 (Ref # 92151B)	92151-1586	1
BOLT-SOCKET,5X10 (Ref # 120)	120S0510	2
BOLT-SOCKET,6X20 (Ref # 120A)	120Z0620	4
BOLT-FLANGED-SMALL,6X25 (Ref # 132)	132J0625	2
BOLT,THROTTLE BODY (Ref # 92151C)	92151-1587	3
BOLT,6X12 (Ref # 92151D)	92151-1588	2
COLLAR,DELIVERY PIPE (Ref # 92152)	92152-1206	1
DAMPER (Ref # 92161)	92161-1058	2
DAMPER (Ref # 92161A)	92161-1062	1
DAMPER,INJECTION NOZZLE (Ref # 92161B)	92161-1083	2
TUBE,THROTTLE-BOOST (Ref # 92191)	92191-1298	1
TUBE,FRONT PORT,RED (Ref # 92191A)	92191-1366	1
TUBE,REAR VALVE,RED (Ref # 92191B)	92191-1367	1
TUBE,FRONT VALVE,BLUE (Ref # 92191C)	92191-1368	1
TUBE,L=130 (Ref # 92191D)	92191-1402	1
TUBE,L=55 (Ref # 92191E)	92191-1403	1
TUBE,REAR PORT,YELLOW (Ref # 92191F)	92191-1564	1
PLATE-POSITION,25KW (Ref # 14014)	14014-1142	1
PLUG,12X25 (Ref # 92068)	92068-006	1
BOLT,5X10,25KW (Ref # 92151)	92151-1528	1