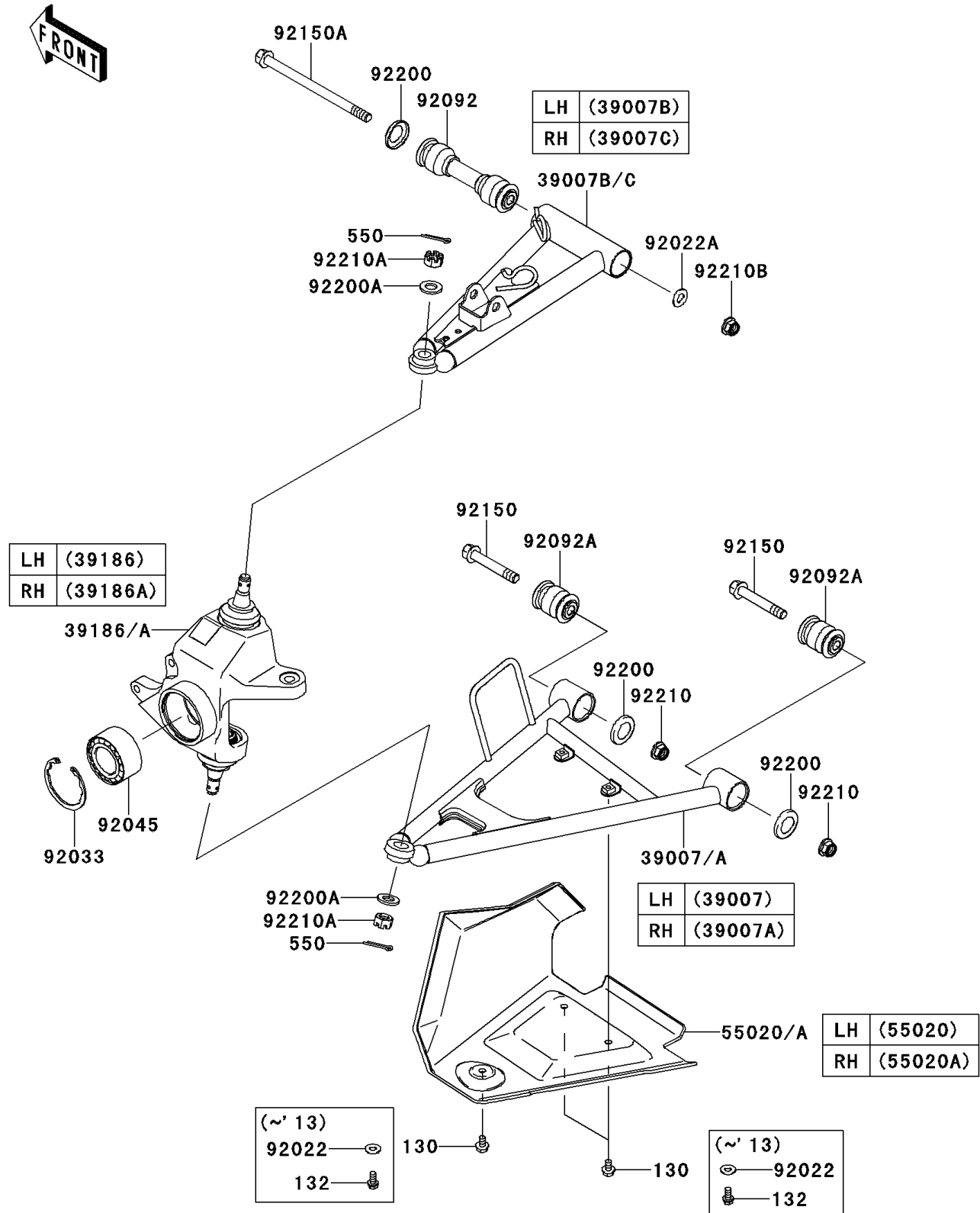


2014 BRUTE FORCE® 750 4x4i EPS PARTS DIAGRAM

Front Suspension

F2152



2014 BRUTE FORCE® 750 4x4i EPS PARTS LIST

Front Suspension

| ITEM NAME | PART NUMBER | QUANTITY |
|---|---------------|----------|
| BOLT-FLANGED,6X10 (Ref # 130) | 130BA0610 | 6 |
| PIN-COTTER,3.0X25 (Ref # 550) | 550AA3025 | 4 |
| ARM-SUSP,FR,LWR,LH (Ref # 39007) | 39007-0176 | 1 |
| ARM-SUSP,FR,LWR,RH (Ref # 39007A) | 39007-0177 | 1 |
| ARM-SUSP,FR,UPP,LH (Ref # 39007B) | 39007-0341 | 1 |
| ARM-SUSP,FR,UPP,RH (Ref # 39007C) | 39007-0342 | 1 |
| KNUCKLE ASSY,FR,LH (Ref # 39186) | 39186-0033 | 1 |
| KNUCKLE ASSY,FR,RH (Ref # 39186A) | 39186-0034 | 1 |
| GUARD,FRONT ARM,LH,F.BLACK (Ref # 55020) | 55020-0109-6Z | 1 |
| GUARD,FRONT ARM,RH,F.BLACK (Ref # 55020A) | 55020-0110-6Z | 1 |
| WASHER,10.2X20X1.5 (Ref # 92022A) | 92022-3742 | 2 |
| RING-SNAP,55MM (Ref # 92033) | 92033-1274 | 2 |
| BEARING-BALL,30BWD08ACA13 (Ref # 92045) | 92045-0095 | 2 |
| BUSHING-RUBBER (Ref # 92092) | 92092-0025 | 2 |
| BUSHING-RUBBER (Ref # 92092A) | 92092-0026 | 4 |
| BOLT,FLANGED,10X63 (Ref # 92150) | 92150-1384 | 4 |
| BOLT,FLANGED,10X150 (Ref # 92150A) | 92150-1686 | 2 |
| WASHER,19X31.8X4 (Ref # 92200) | 92200-0582 | 6 |
| WASHER,12.3X23X2.3 (Ref # 92200A) | 92200-1004 | 4 |
| NUT,LOCK,FLANGED,10MM (Ref # 92210) | 92210-0276 | 4 |
| NUT,CASTLE,12MM (Ref # 92210A) | 92210-0395 | 4 |
| NUT,LOCK,FLANGED,10MM (Ref # 92210B) | 92210-1081 | 2 |