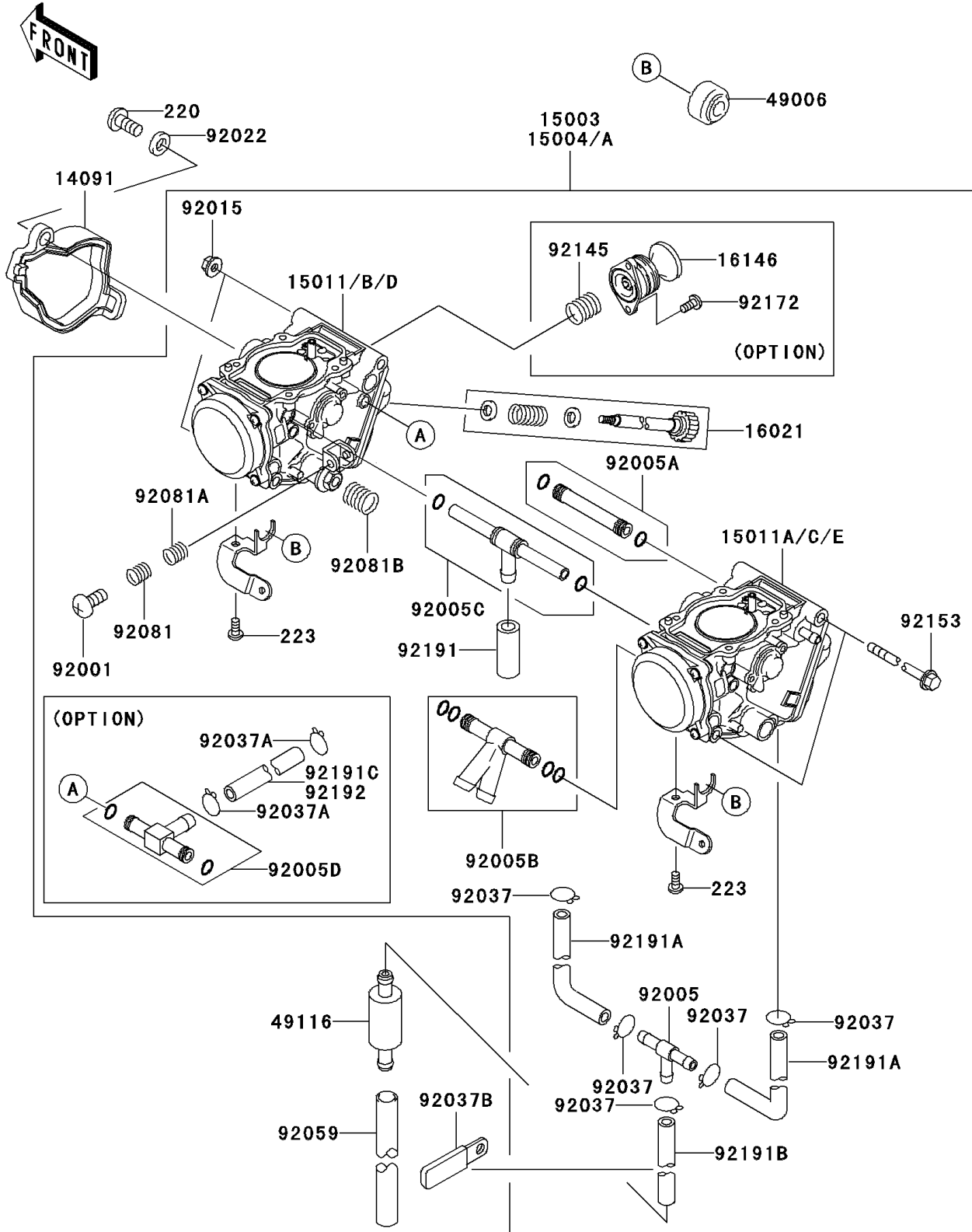


2007 Brute Force 650 4x4 PARTS DIAGRAM

Carburetor(US)

E1611



2007 Brute Force 650 4x4 PARTS LIST

Carburetor(US)

| ITEM NAME | PART NUMBER | QUANTITY |
|---|-------------|----------|
| CLAMP,TUBE (Ref # 92037A) | 92037-1201 | 2 |
| COVER,THROTTLE CABLE (Ref # 14091) | 14091-1196 | 1 |
| CARBURETOR-ASSY (Ref # 15003) | 15003-0095 | 1 |
| CARBURETOR-ASSY,CVKR32 (Ref # 15004) | 15004-0009 | 1 |
| CARBURETOR,FR (Ref # 15011) | 15011-0094 | 1 |
| CARBURETOR,RR (Ref # 15011A) | 15011-0095 | 1 |
| CARBURETOR,FR (Ref # 15011B) | 15011-0100 | 1 |
| CARBURETOR,RR (Ref # 15011C) | 15011-0101 | 1 |
| SCREW-THROTTLE STOP (Ref # 16021) | 16021-1238 | 1 |
| COVER-ASSY,PRIMING (Ref # 16146) | 16146-1225 | 1 |
| BOOT,STARTER CABLE (Ref # 49006) | 49006-1353 | 2 |
| VALVE-ASSY (Ref # 49116) | 49116-1126 | 1 |
| BOLT,THROTTLE ADJUST (Ref # 92001) | 92001-1998 | 1 |
| FITTING,FUEL,T-TYPE (Ref # 92005) | 92005-1112 | 1 |
| FITTING (Ref # 92005A) | 92005-1375 | 1 |
| FITTING (Ref # 92005B) | 92005-1376 | 1 |
| FITTING (Ref # 92005C) | 92005-1385 | 1 |
| SCREW-PAN-CROS,4X8 (Ref # 220) | 220AA0408 | 1 |
| SCREW-PAN-WS-CROS,4X8 (Ref # 223) | 223AA0408 | 4 |
| FITTING (Ref # 92005D) | 92005-1393 | 1 |
| NUT,FLANGED,5MM (Ref # 92015) | 92015-1259 | 2 |
| WASHER,5.2X13X1 (Ref # 92022) | 92022-1380 | 1 |
| CLAMP,TUBE (Ref # 92037) | 92037-1201 | 5 |
| CLAMP,L=45 (Ref # 92037B) | 92037-1539 | 1 |
| TUBE,7X10X100 (Ref # 92059) | 92059-1736 | 1 |
| SPRING (Ref # 92081) | 92081-1620 | 1 |
| SPRING,THROTTLE ADJUST LWR (Ref # 92081A) | 92081-1621 | 1 |
| SPRING,THROTTLE ADJUST CNT (Ref # 92081B) | 92081-1622 | 1 |
| SPRING,PRIMING (Ref # 92145) | 92145-1451 | 1 |

2007 Brute Force 650 4x4 PARTS LIST

Carburetor(US)

| ITEM NAME | PART NUMBER | QUANTITY |
|--------------------------------|-------------|----------|
| BOLT,5X143 (Ref # 92153) | 92153-1068 | 2 |
| SCREW (Ref # 92172) | 92172-0230 | 2 |
| TUBE,7X11X25 (Ref # 92191) | 92191-1672 | 1 |
| TUBE,4.5X8X65 (Ref # 92191A) | 92191-1673 | 2 |
| TUBE,4.5X8X420 (Ref # 92191B) | 92191-1674 | 1 |
| TUBE,4.5X8.5X35 (Ref # 92191C) | 92191-1676 | 1 |