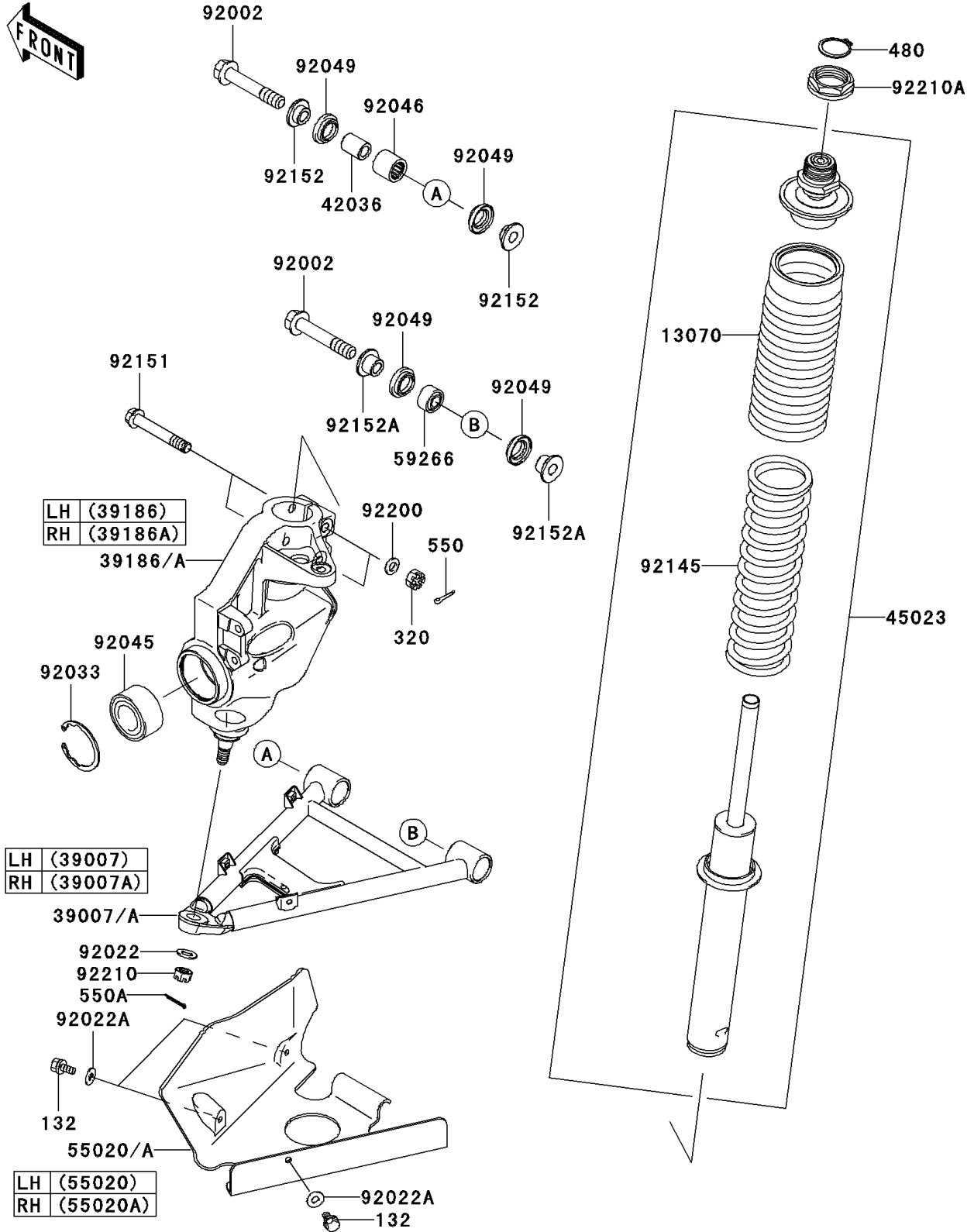


2010 Brute Force® 650 4x4 PARTS DIAGRAM

Suspension

F2150



2010 Brute Force® 650 4x4 PARTS LIST

Suspension

| ITEM NAME | PART NUMBER | QUANTITY |
|---|-------------|----------|
| BOLT-FLANGED-SMALL,6X12 (Ref # 132) | 132BB0612 | 6 |
| NUT-CASTLE (Ref # 320) | 320BA1000 | 4 |
| CIRCLIP-TYPE-C,32MM (Ref # 480) | 480J3200 | 2 |
| PIN-COTTER,2.0X15 (Ref # 550) | 550AA2015 | 4 |
| PIN-COTTER,3.0X25 (Ref # 550A) | 550AA3025 | 2 |
| GUIDE,STRUT (Ref # 13070) | 13070-1383 | 2 |
| ARM-SUSP,LH (Ref # 39007) | 39007-0058 | 1 |
| ARM-SUSP,RH (Ref # 39007A) | 39007-0059 | 1 |
| KNUCKLE ASSY,FR,LH (Ref # 39186) | 39186-0041 | 1 |
| KNUCKLE ASSY,FR,RH (Ref # 39186A) | 39186-0042 | 1 |
| SLEEVE,12X20X26.7 (Ref # 42036) | 42036-1365 | 2 |
| STRUT (Ref # 45023) | 45023-0004 | 2 |
| GUARD,FRONT AXLE,LH (Ref # 55020) | 55020-1768 | 1 |
| GUARD,FRONT AXLE,RH (Ref # 55020A) | 55020-1769 | 1 |
| JOINT-BALL (Ref # 59266) | 59266-1118 | 2 |
| BOLT,FLANGED,12X67 (Ref # 92002) | 92002-1861 | 4 |
| WASHER,12.3X22X1.6 (Ref # 92022) | 92022-1065 | 2 |
| WASHER,7X16X1.2 (Ref # 92022A) | 92022-1344 | 6 |
| RING-SNAP,55MM (Ref # 92033) | 92033-1274 | 2 |
| BEARING-BALL,30BWD08ACA13 (Ref # 92045) | 92045-0095 | 2 |
| BEARING-NEEDLE,TA202725ZE (Ref # 92046) | 92046-1290 | 2 |
| SEAL-OIL,MF020N3 (Ref # 92049) | 92049-1539 | 8 |
| SPRING,STRUT,K=10.8N/MM (Ref # 92145) | 92145-0009 | 2 |
| BOLT,FLANGED,10X65 (Ref # 92151) | 92151-1709 | 4 |
| COLLAR (Ref # 92152) | 92152-1295 | 4 |
| COLLAR (Ref # 92152A) | 92152-1296 | 4 |
| WASHER,10.5X19X2.3 (Ref # 92200) | 92200-1042 | 4 |
| NUT,CASTLE,12MM (Ref # 92210) | 92210-0395 | 2 |
| NUT,FLANGED,35MM (Ref # 92210A) | 92210-1226 | 2 |