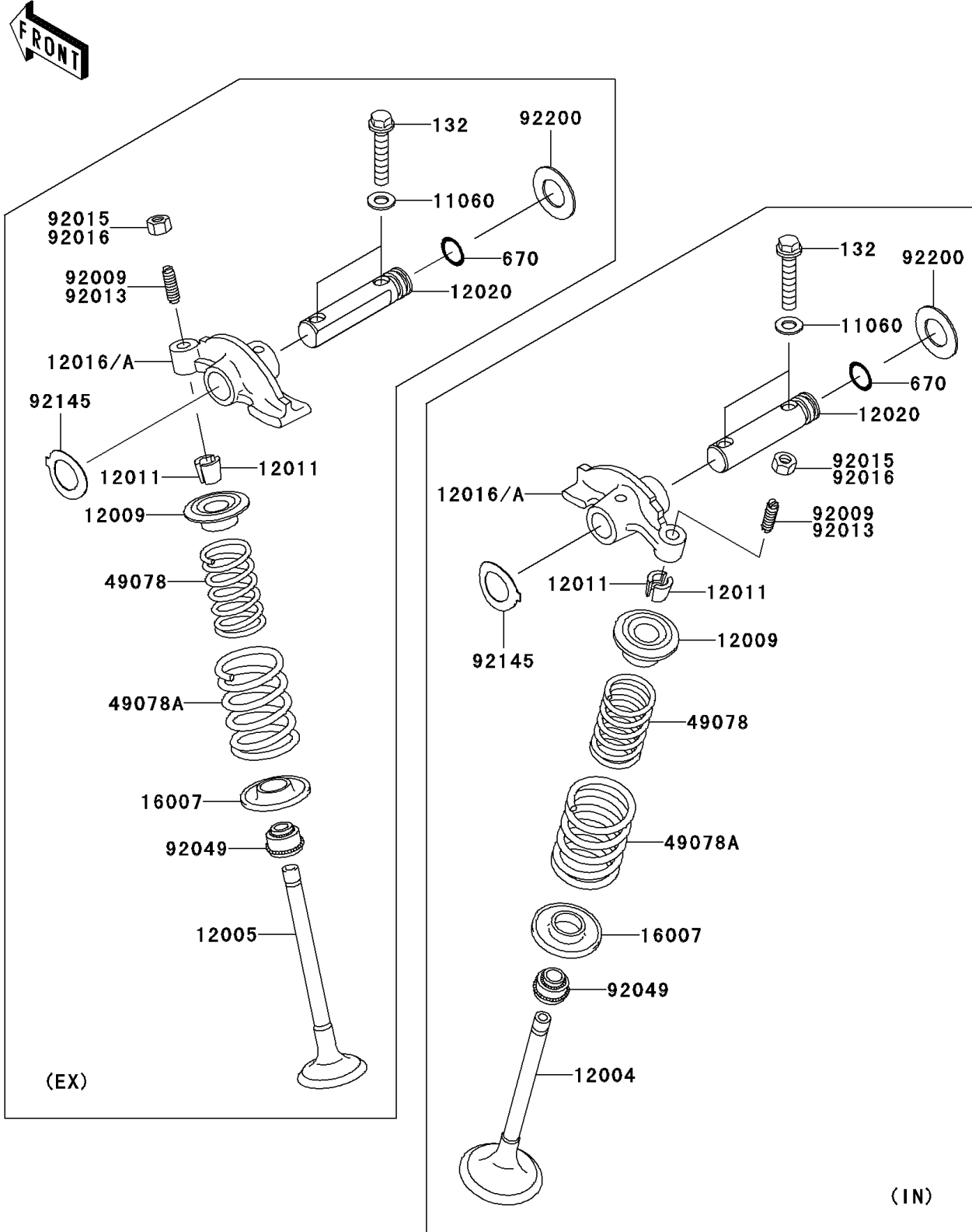


2007 Prairie 360 PARTS DIAGRAM

Valve(s)

E1210



2007 Prairie 360 PARTS LIST

Valve(s)

| ITEM NAME | PART NUMBER | QUANTITY |
|--|-------------|----------|
| BOLT-FLANGED-SMALL,6X30 (Ref # 132) | 132BD0630 | 4 |
| O RING,10MM (Ref # 670) | 670D1510 | 2 |
| GASKET,6.2X12X0.3 (Ref # 11060) | 11060-1994 | 4 |
| VALVE-INTAKE (Ref # 12004) | 12004-1155 | 1 |
| VALVE-EXHAUST (Ref # 12005) | 12005-1326 | 1 |
| RETAINER-VALVE SPRING (Ref # 12009) | 12009-005 | 2 |
| COLLET,RETAINER (Ref # 12011) | 12011-004 | 4 |
| ARM-ROCKER (Ref # 12016) | 12016-0024 | 2 |
| SHAFT-ROCKER (Ref # 12020) | 12020-1085 | 2 |
| SEAT-SPRING,VALVE (Ref # 16007) | 16007-1024 | 2 |
| SPRING-ENGINE VALVE,INNER (Ref # 49078) | 49078-1209 | 2 |
| SPRING-ENGINE VALVE,OUTER (Ref # 49078A) | 49078-1210 | 2 |
| SCREW,VALVE ADJUST (Ref # 92009) | 92009-1109 | 2 |
| NUT,VALVE ADJUST LOCK (Ref # 92015) | 92015-1137 | 2 |
| SEAL-OIL,RV37129.5 (Ref # 92049) | 92049-016 | 2 |
| SPRING,ROCKER SHAFT (Ref # 92145) | 92145-1532 | 2 |
| WASHER,13.4X25X1.0 (Ref # 92200) | 92200-0045 | 2 |